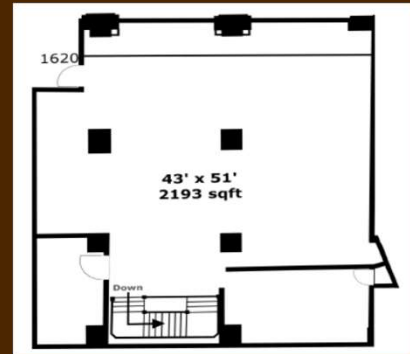


Retail Property for Lease

1620 Orrington Avenue in the Heart of Downtown Evanston, IL



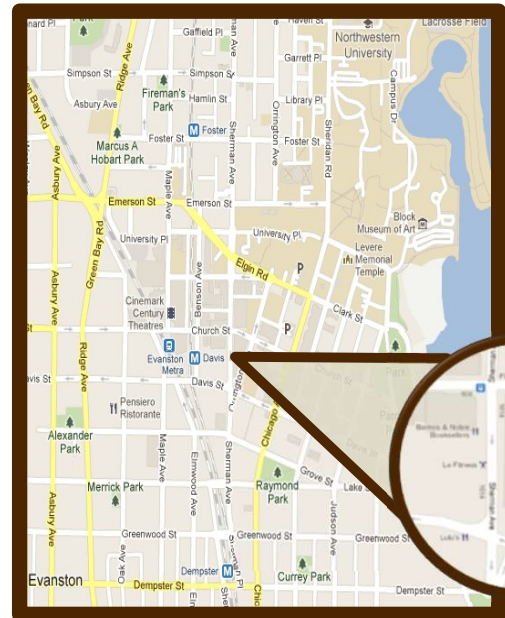
**\$20.00/sq ft (\$3,600.00/mth) NNN; CAM Estimate \$10.98/sq ft (\$2,017.00/mth)
Estimated Monthly Payment: \$5,617.00**

Space Features

- 2200 square feet, open floor plan
- covered entry with 14-foot ceilings
- black iron venting for restaurant
- large display windows
- free basement storage

Area Amenities

- 1 block to Metra and CTA
- Great shopping, coffee shops, dining and fitness center
- Great walkability with ample street and deck parking



ROBINSONrental
What Property Management Should Be

For more information contact:

Andrea Faush

(847) 866-1966

andrea@robinsonrental.com

www.robinsonrental.com