

THE CHANDLER'S BUILDING

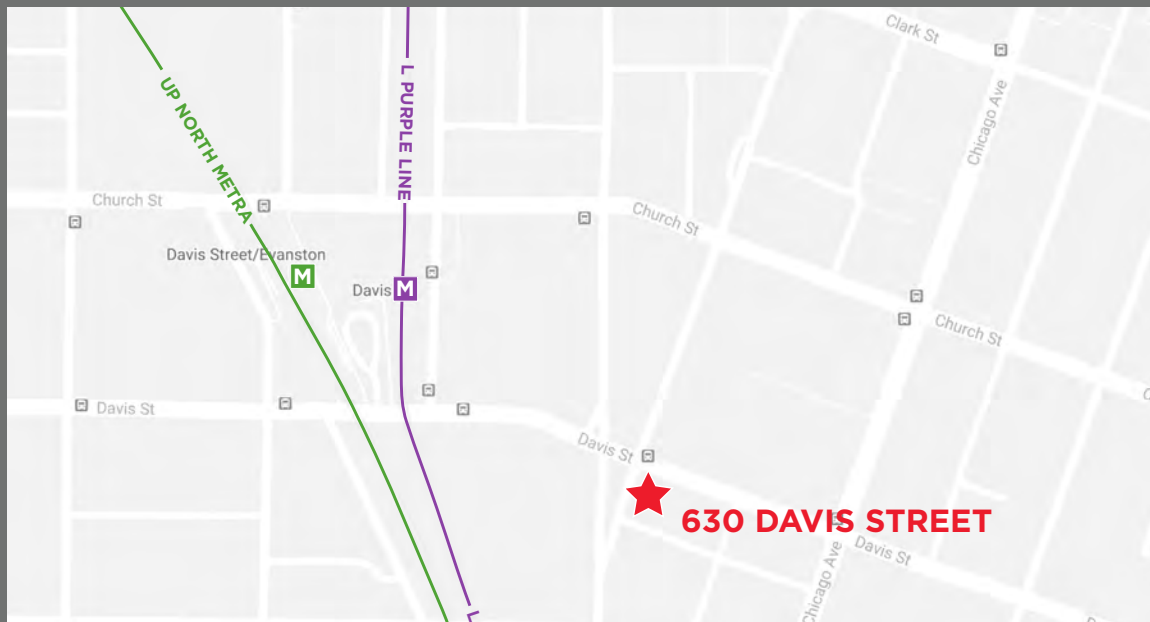
630 DAVIS STREET, EVANSTON, IL

Situated at the bustling intersection of Davis Street and Orrington Avenue, The Chandler's Building was built in 1910. The building underwent a complete transformation in 1999 to become one of Evanston's premier Class A office buildings.

With dozens of dining and retail options within walking distance, and convenient service via the Metra commuter train and the L train, 630 Davis is the perfect hub to attract top talent and elevate corporate identity. The building offers the charm of vintage concrete columns, large windows overlooking the plaza and Fountain Square, and loft-style high ceilings with exposed duct work.

ASKING RATE: \$33.00 - 35.00 MODIFIED GROSS
(HVAC AND ELECTRICITY SEPARATELY METERED, JANITORIAL INCLUDED)

TAXES: \$7.84/SF OPEX: \$4.76/SF (EST 2019)



CHRIS CUMMINS - 847.518.3238 - CHRIS.CUMMINS@CUSHWAKE.COM

THE CHANDLER'S BUILDING

630 DAVIS STREET, EVANSTON, IL



SUITE 200



**NEWLY CONSTRUCTED SPEC
SUITE NOW AVAILABLE!**

This modern space brings character and style to your office with its dramatic window lines and exposed ceilings. Situated in the heart of Evanston, the convenient layout features a kitchenette with stainless steel appliances and a central glass conference room.

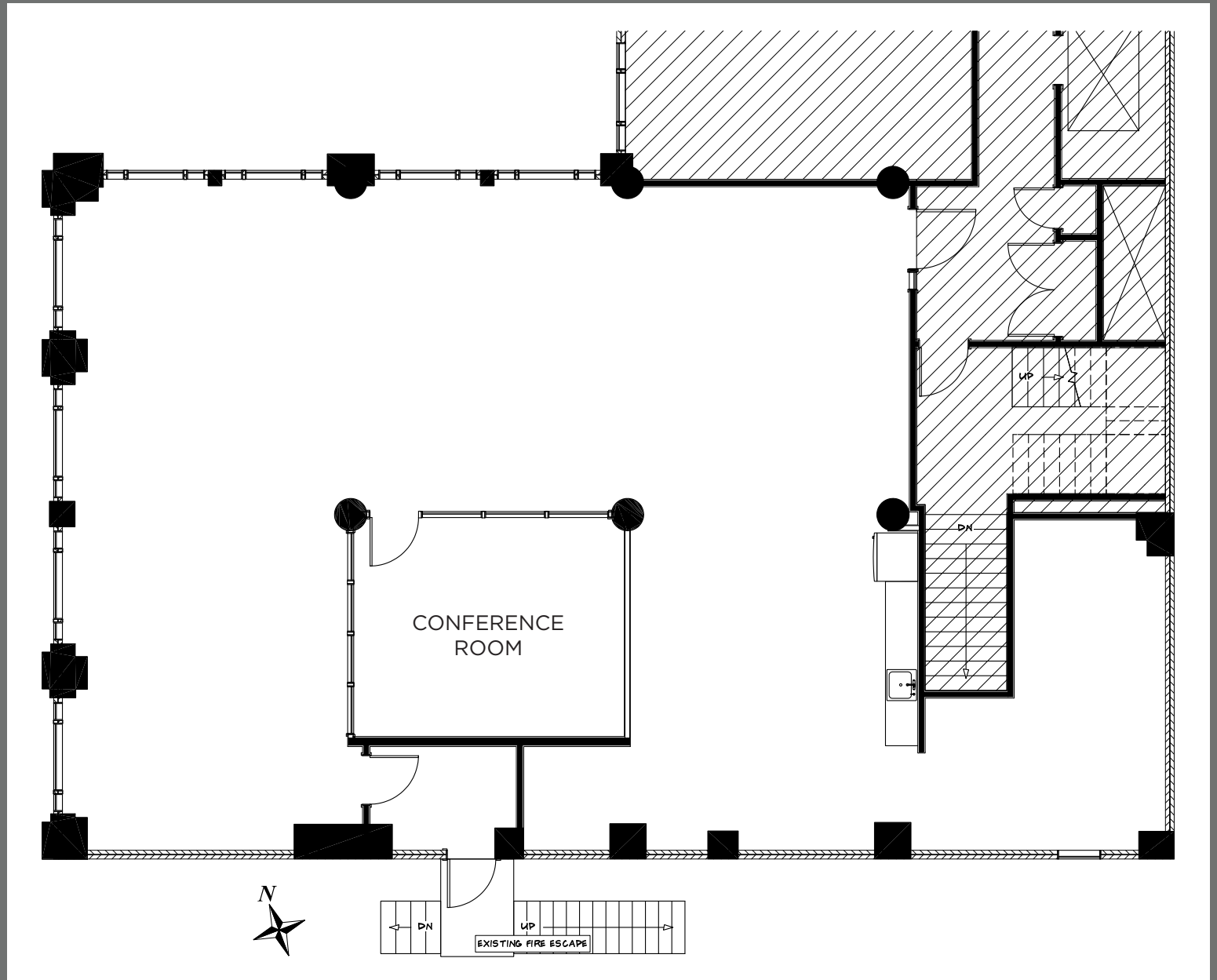
THE CHANDLER'S BUILDING

630 DAVIS STREET, EVANSTON, IL

SUITE 200

3,000 RSF

\$35.00/SF
MODIFIED GROSS



CUSHMAN &
WAKEFIELD

CHRIS CUMMINS - 847.518.3238 - CHRIS.CUMMINS@CUSHWAKE.COM

THE CHANDLER'S BUILDING

630 DAVIS STREET, EVANSTON, IL

SUITE 500

5,092 RSF

\$33.00/SF
MODIFIED GROSS

